

Berklee College of Music

Research Media and Information Exchange

ABLE Assembly Conference Session Materials

ABLE Resource Center Formats

4-10-2022

Using Design Examples in Arts Courses as On-Going Advocacy for Inclusion in Art and Design Teaching and Projects

Samantha Goss

Follow this and additional works at: <https://remix.berklee.edu/able-assembly-conference>

Recommended Citation

Goss, S. (2022). Using Design Examples in Arts Courses as On-Going Advocacy for Inclusion in Art and Design Teaching and Projects. Retrieved from <https://remix.berklee.edu/able-assembly-conference/85>

This ABLE Assembly Conference Session Materials is brought to you for free and open access by the ABLE Resource Center Formats at Research Media and Information Exchange. It has been accepted for inclusion in ABLE Assembly Conference Session Materials by an authorized administrator of Research Media and Information Exchange. For more information, please contact jmforce@berklee.edu, mburke3@berklee.edu.

Using Design Examples in Arts Courses

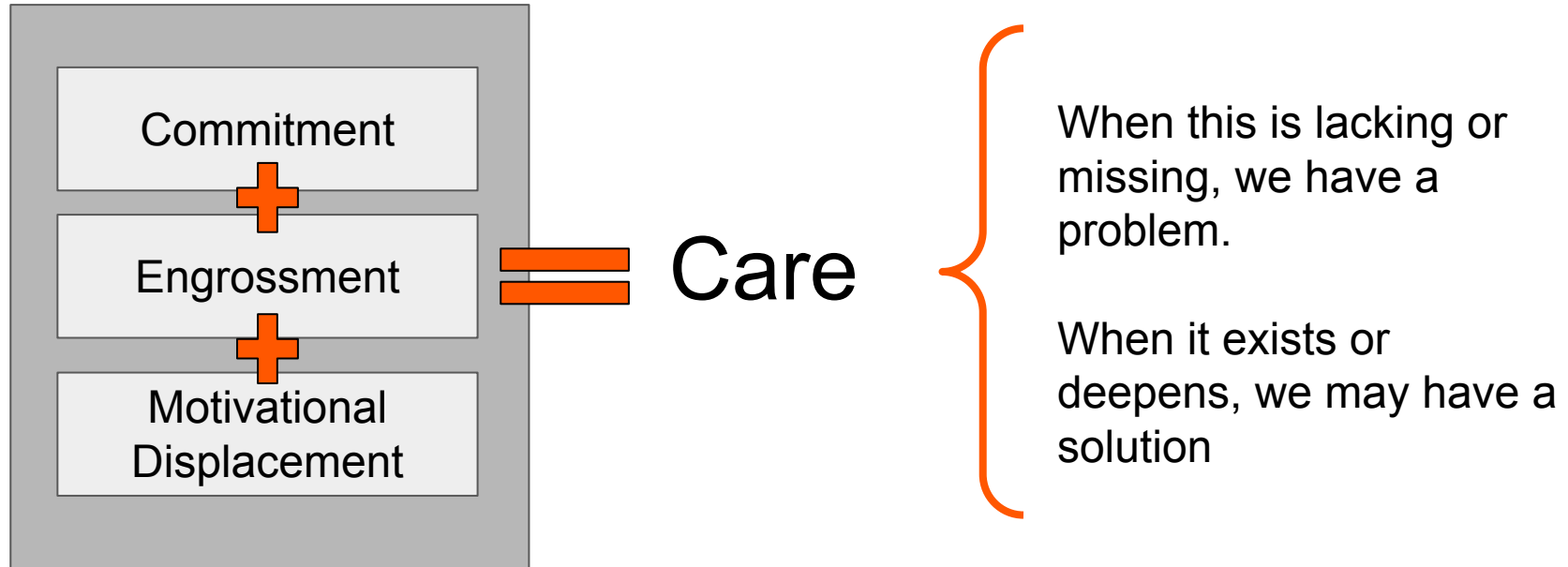
as Ongoing Advocacy for Inclusion in Art and Design Teaching and Projects

Dr. Samantha Goss
University of Northern Iowa, Art Education
ABLE Assembly 2022

Agenda

- Context/Problem & Goals
- Solutions - Bigger Picture
- Solutions - In Practice

Source of the Problem and Solution



The Goals I had in mind

- Make choices and take actions that contribute to a more inclusive, accessible, and equitable society.
- Select art and design examples to include in my teaching that contribute
- Enhance awareness especially in students without any personal touch points
- Cultivate an the ability and desire to take on an alternative perspective

Consider...

When have you been engrossed? When and where did your commitment begin? When was it reinforced? What does your awareness include or accomplish or inform?

Solutions

Bigger Picture - Mindset of Possibilities

Solutions

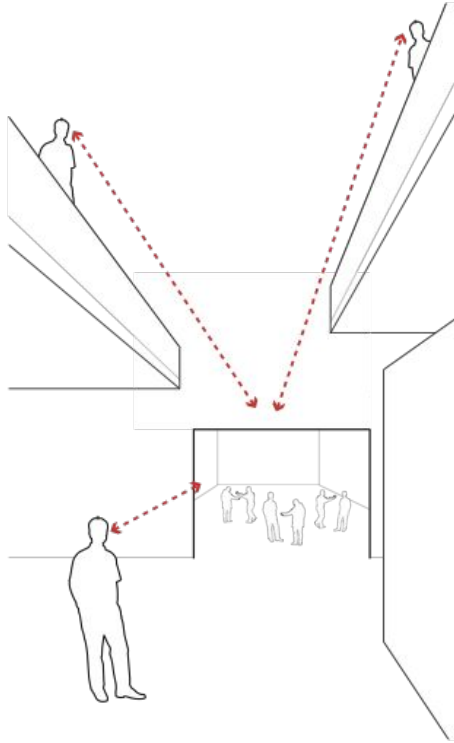
In Practice - Art and Design Examples

DeafSpace



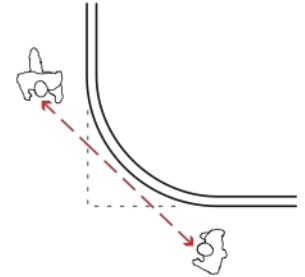
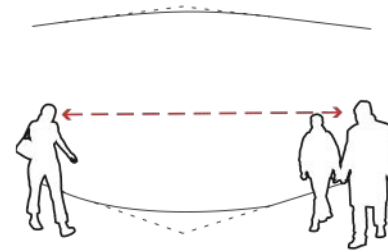
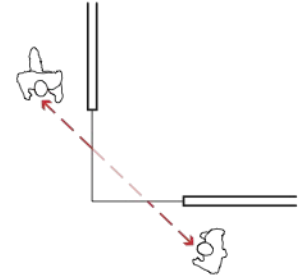
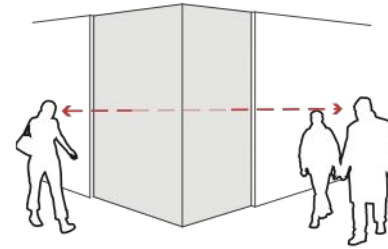
Two images of Gallaudet's Living and Learning Residence Hall 6 retrieved from:
<https://www.archdaily.com/406845/architecture-s-first-full-fledged-experiment-in-deafspace-design>

DeafSpace



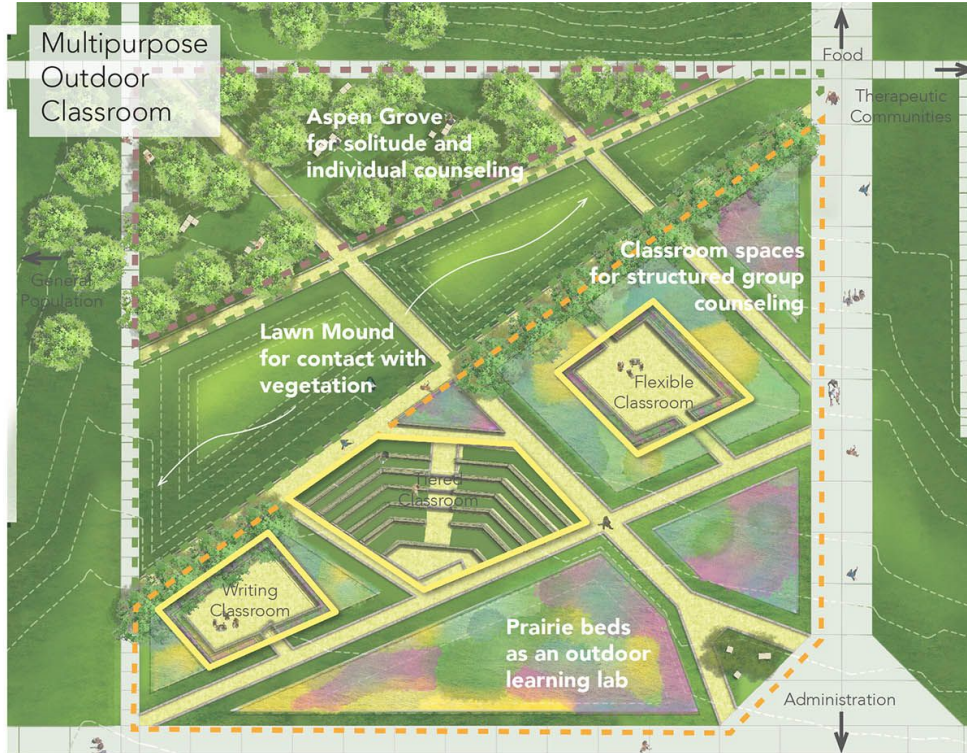
Sensory reach - lines
of sight (left)

Mobility - soft
intersections (right)



Landscapes of Justice

Institute for Arts Education
and Special Needs



Offenders walking the paths and sitting in the outdoor classroom.

An image of the plans for the multipurpose outdoor classroom.

Tools: Extending Our Reach

Exhibition of designed
objects and sketches

at
Cooper Hewitt
Smithsonian
Design Museum



Flex-Foot Cheetah® Xtend
Running Blade



Autofold Cane (USA)

Thank You!

samantha.goss@uni.edu