

No Limits Media

Larry Rothstein Ed.D / Co-founder &
Executive Director of No Limits Media



BIAESN

Berklee Institute for
Arts Education and
Special Needs

***ABLE** Assembly*
October 2020

#ABLE_2020

Goals Of Presentation

- Understand what stories the media tells about disabilities.
- Understand what kinds of television shows do not include people with disabilities.
- Understand that people with disabilities can create their own shows.
- Understand what you can do.





Mission is to show the value and abilities of people with disabilities. We are developing several television series created, produced, and starring people with disabilities about their real lives and the real issues they face. Our hope is that these groundbreaking shows will provide people with disabilities and able bodied people with a new view of this community.



BIAESN

Berklee Institute for
Arts Education and
Special Needs

ABLE Assembly
October 2020

#ABLE_2020

Heartwarming & Pity



A collage of three images related to cleft lip and palate awareness. The top image shows a grid of 10 babies' faces, with the text "1 in 10 children born with a cleft will die before their first birthday." and a "DONATE NOW" button. The middle image shows a close-up of a smiling baby with the text "ONE SURGERY. A Lifetime of Smiles." and a "DONATE NOW >" button. The bottom image shows a woman kissing a baby with a cleft lip and palate, with the text "Every 3 minutes, a child is born with a cleft" and a "HELP HEAL A SMILE" button.



Structural Ableism



BIAESN

Berklee Institute for
Arts Education and
Special Needs

ABLE Assembly
October 2020

#ABLE_2020



CBS shows how girl with autism bonds with a bride who she thought to be Cinderella.



BIAESN

Berklee Institute for
Arts Education and
Special Needs

ABLE Assembly
October 2020

#ABLE_2020



CBS features
Jamarion, a teen
playing basketball
without arms.



BIAESN

Berklee Institute for
Arts Education and
Special Needs

ABLE Assembly
October 2020

#ABLE_2020

Tom Brady takes the field for The Best Buddies Challenge.





CNN commentators are diverse, but there is no representation of people with disabilities.



BIAESN

Berklee Institute for
Arts Education and
Special Needs

ABLE Assembly
October 2020

#ABLE_2020



Patrick Henry being the only person with a disability presented on Family Feud.



BIAESN

Berklee Institute for
Arts Education and
Special Needs

ABLE Assembly
October 2020

#ABLE_2020



**Eddie Timanus-
Blind Jeopardy
Contestant**



**Trenton Girone-
First Disability
Contestant On
Wheel Of Fortune
After 6,000 Episodes**



**Danielle Perez-
Wheelchair Contestant
Wins Treadmill &
Sauna on Price is
Right.**



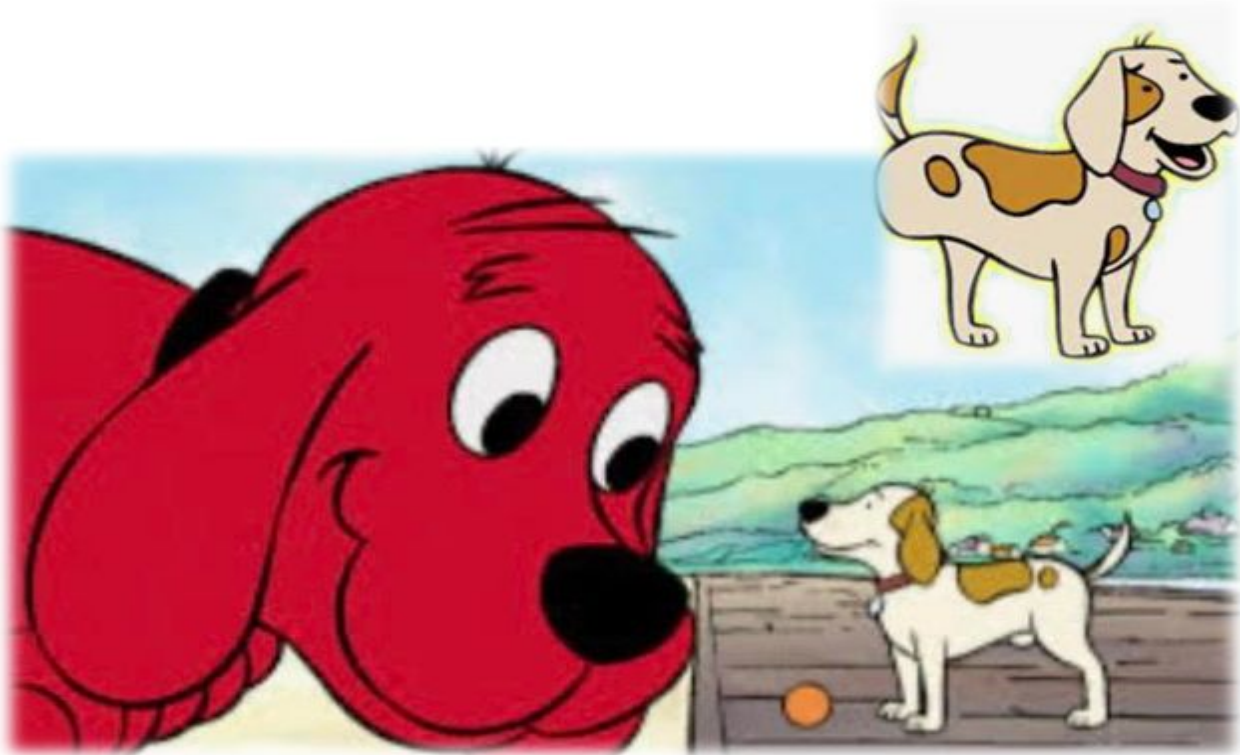
BIAESN

Berklee Institute for
Arts Education and
Special Needs

ABLE Assembly
October 2020

#ABLE_2020

PBS KID's two representation of characters with a disability.



BIAESN

Berklee Institute for
Arts Education and
Special Needs

ABLE Assembly
October 2020

#ABLE_2020



ODD SQUAD intends to show diversity, but failed to include a character with a disability.



BIAESN

Berklee Institute for
Arts Education and
Special Needs

ABLE Assembly
October 2020

#ABLE_2020

S E R I E S

H O S T S



C H R I S W A D D E L L

Chris is a 13-time Paralympic champion and an inductee of the Paralympic Hall of Fame. He has served as co-anchor for NBC's coverage of the last two Paralympic Games. In 2009, he became the first paraplegic to climb Mount Kilimanjaro. He is a sought after corporate speaker and is CEO of One Revolution, a non-profit whose mission is to change the perception of people with disabilities.



N A D I N E V O G E L

Nadine is the CEO of Springboard, a global company that works with national and multinational corporations around the world to successfully mainstream disability in the global workforce. In addition, it produces the world-renowned Disability Matters Conference and Awards Gala. Nadine is also Founder and CEO of the Springboard Foundation which provides scholarships to college students with disabilities.



BIAESN

Berklee Institute for
Arts Education and
Special Needs

ABLE Assembly
October 2020

#ABLE_2020



A groundbreaking six-part television series spotlighting the best business practices for mainstreaming people with disabilities.



BIAESN

Berklee Institute for
Arts Education and
Special Needs

ABLE Assembly
October 2020

#ABLE_2020



Rolling Across America a docuseries hosted by Chris Waddell. Chris will travel the country profiling the disability community.



BIAESN

Berklee Institute for
Arts Education and
Special Needs

ABLE Assembly
October 2020

#ABLE_2020



This is Ady Barkan, an American lawyer and liberal activist, diagnosed with ALS.

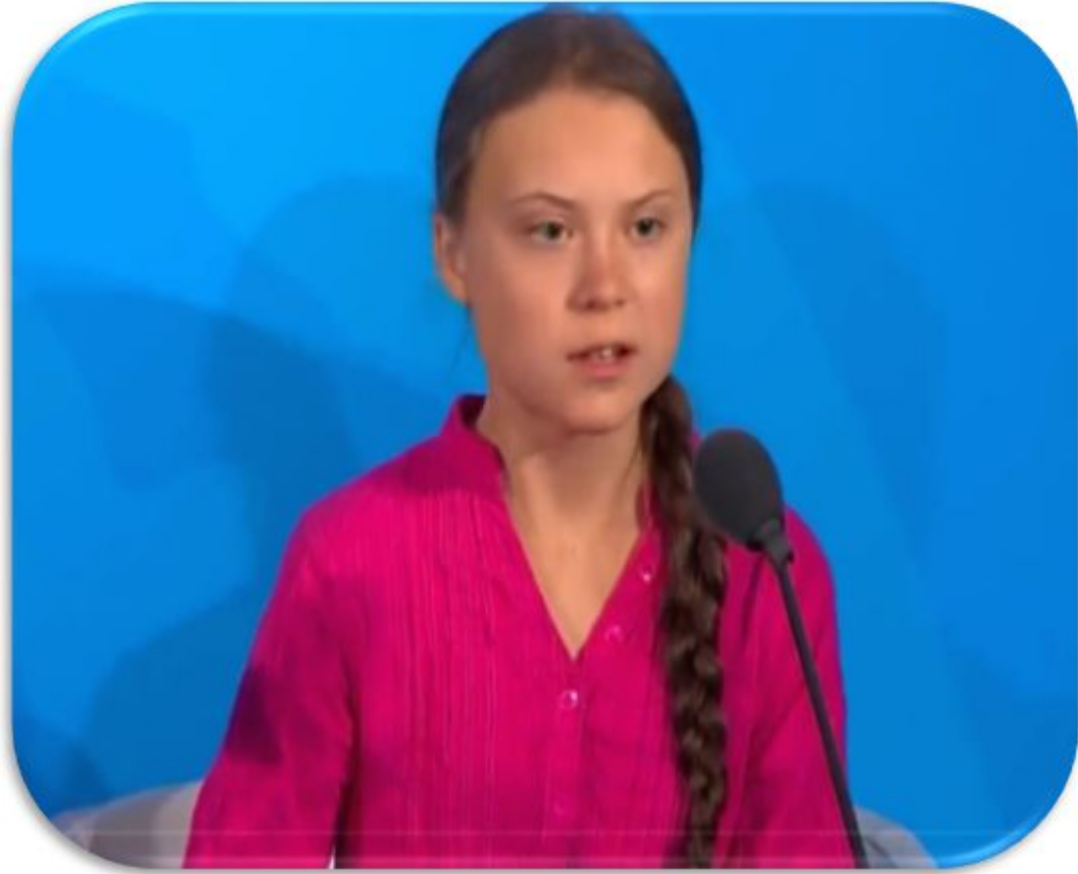


BIAESN

Berklee Institute for
Arts Education and
Special Needs

ABLE Assembly
October 2020

#ABLE_2020



Greta Thunberg, a young environmental activist. She has been diagnosed with Asperger, OCD, and Selective Mutism.



BIAESN

Berklee Institute for
Arts Education and
Special Needs

ABLE Assembly
October 2020

#ABLE_2020

What Can You



1.) Educate your students on these issues.



2.) Encourage them to use their creativity, and make their own films.



3.) Record it on something as simple as your phone.



4.) Send It To Us!!!
We will post it on our website.
nolimitmedia.org



BIAESN

Berklee Institute for
Arts Education and
Special Needs

ABLE Assembly
October 2020

#ABLE_2020



**No Limits Media
64 Calumet Street
Boston, MA 02120**

Phone: (617) 232 - 0726

Email: Larry.Rothstein@nolimitsmedia.org



BIAESN

**Berklee Institute for
Arts Education and
Special Needs**

ABLE Assembly
October 2020

#ABLE_2020